

Dwarf Boards

DB046 : screw connectors and wire cups

(c) Van Ooijen Technische Informatica
version 1.0

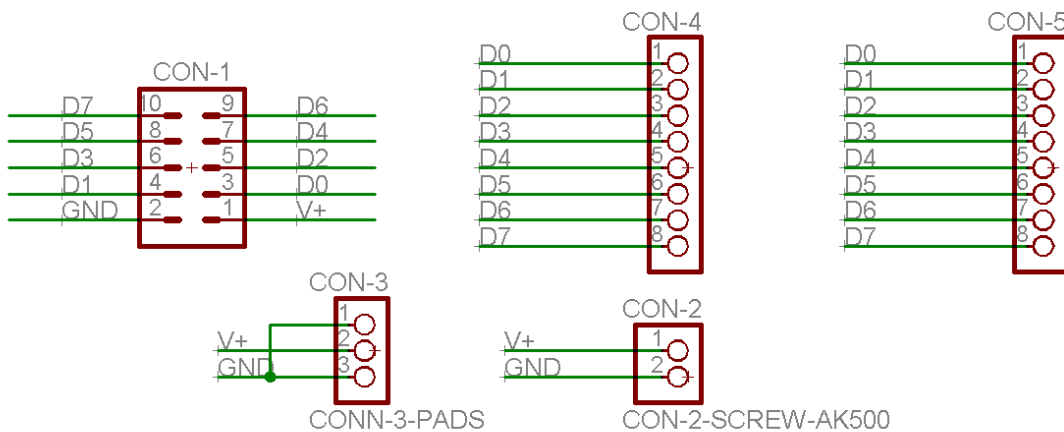
PICmicro, In-Circuit Serial Programming and ICSP are registered trademarks of Microchip Technology Inc.



Introduction

This document describes the Dwarf Board DB046. This is a very simple peripheral board that provides access to the 8 data lines and the power and ground of a single DB bus.

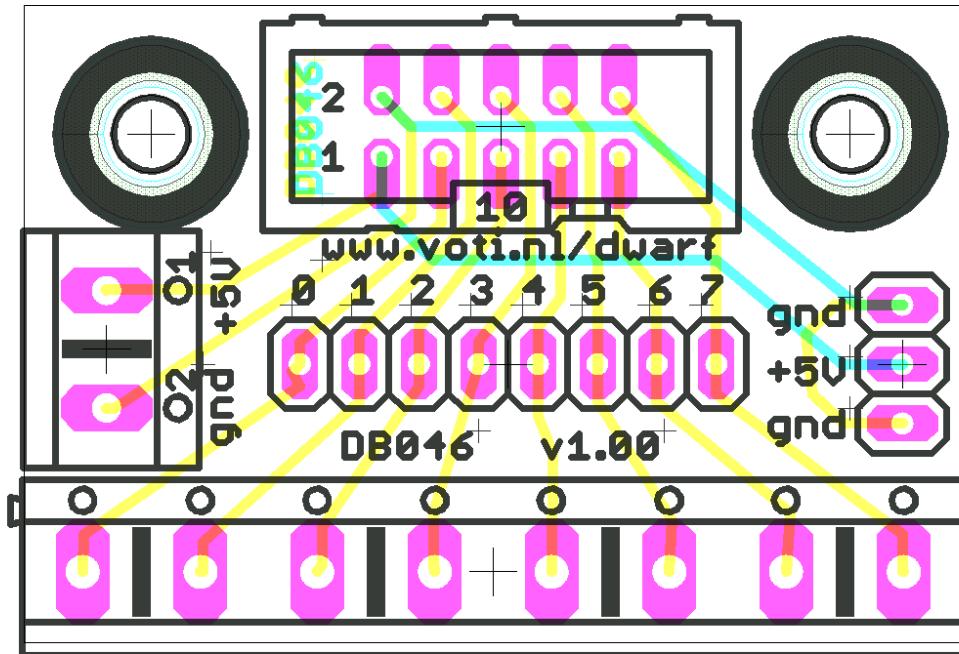
Circuit



The circuit is very simple: the data and power/ground lines from the DB connector CON-1 are made available on the wires cups CON-3/CON-4, and the screw connectors CON-2/CON-5.

Component Placement

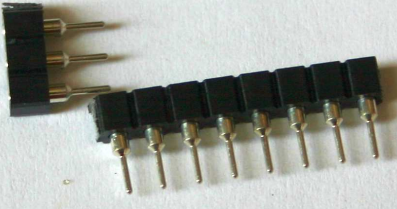
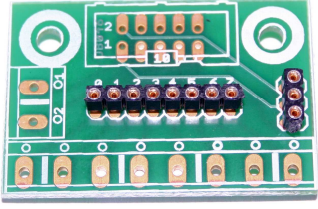
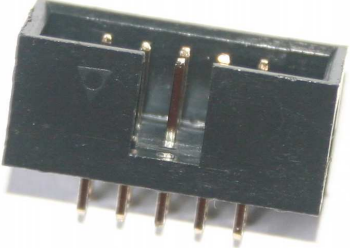
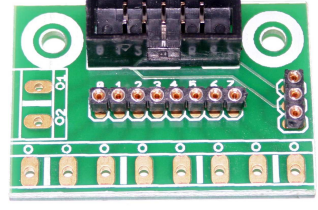
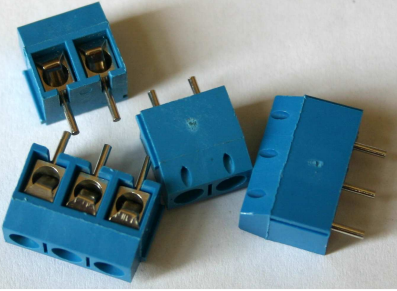
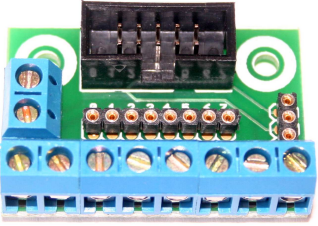
The figure below shows the placement of the components on the PCB, and where the ground and +5V are on the connectors. The leftmost of the row of screw connectors connects to bit 0.



Assembly

Assembling the kit is not difficult, no fine-pitched or SMD components are used. Just follow the instructions below carefully. Some soldering experience is recommended.

| | | |
|--|---|--|
| | <p>Place the PCB as shown on the pictures and in the previous paragraph. The silkscreen (component side) text should be readable.</p> | |
|--|---|--|

| | | |
|--|--|--|
|  | <p>Place and solder the wire cup strips.</p> |  |
|  | <p>Place and solder the ML10 connector. As show on the picture, the gap in the shroud must point away from the edge of the PCB.</p> |  |
|  | <p>Combine two 3-pin and one 2-pin screw connectors to a strip of 8. Place and solder this strip of 8 and the remaining 2-pin connector. Take care that the wire entry side is at the edge of the PCB.</p> |  |

Change notes

the latest version of this document can be downloaded from <http://www.voti.nl/dwarf>

| version | date | Notes |
|---------|------------|---------------|
| 1.0 | 2009-01-19 | first version |