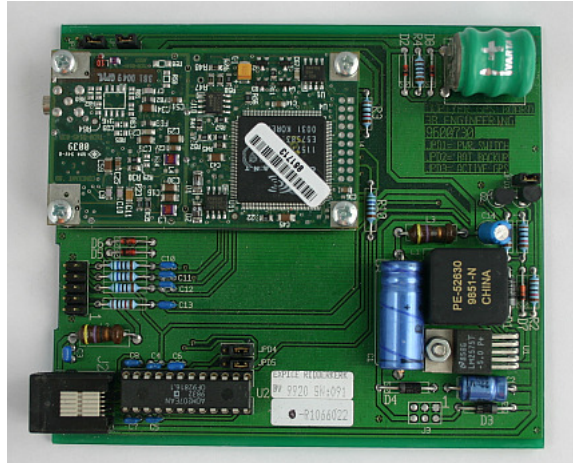


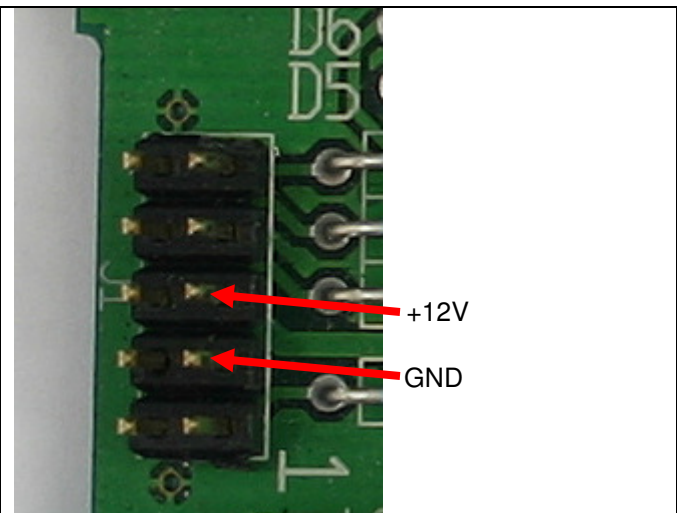
GPS-02 / GPS-03 documentation

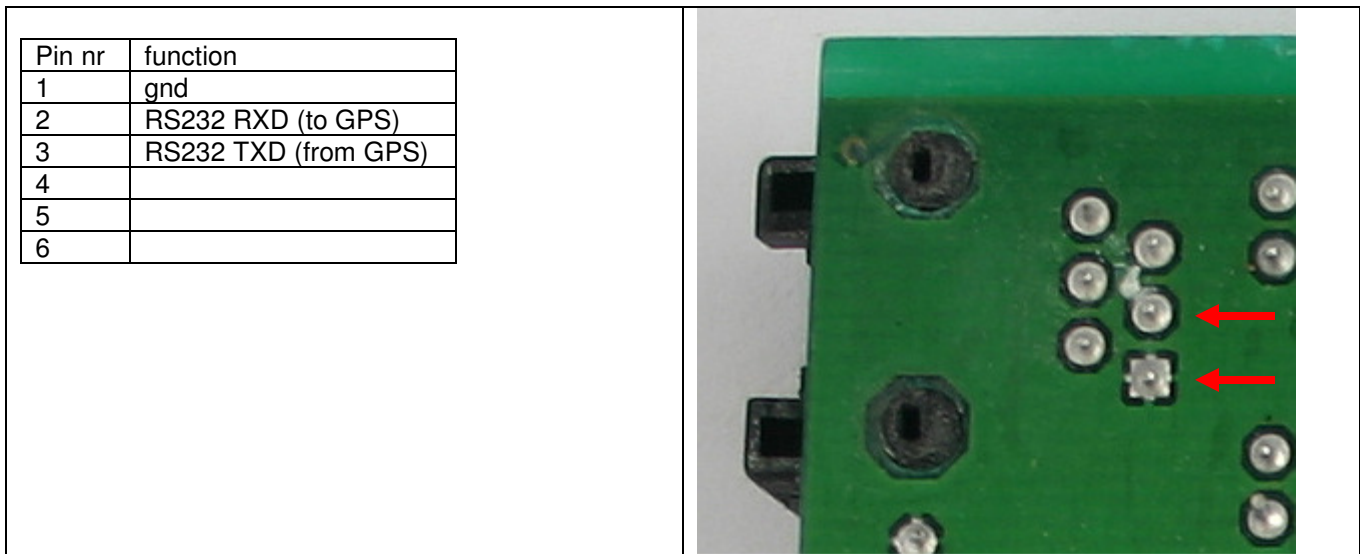


This is a surplus (used) Rockwell TU30-D145 GPS module with a support print and antenna (various types of antennas, but GPS-02 always passive; GPS-03 always active). The support print contains an RS232 interface (ADM207EAN chip), a DC/DC converter (LM2575 etc) and a back-up battery. The battery has not been tested; it is probably empty or dead. The GPS module and the RS232 interface on the support module have been tested and found OK. When you test the GPS module you must place the antenna outdoors with a clear view of the sky, and you will have to wait some minutes for the GPS module to acquire a first fix.

The support print requires 12V DC at the 10-pin header. NMEA data is send at RS232 level and polarity at the RJ11/12 connector. The pinout for both connectors is shown below.

Pin nr	function
1	
2	
3	gnd
4	
5	+12 Volt
6	gnd
7	
8	
9	
10	gnd





The site <http://gpskit.nl/> (Dutch and English versions available) contains lots of information about the Rockwell Jupiter TU30-D140 module, which is similar to the module I sell. The module sends its data at 4800 baud in NMEA format. An explanation of this format can be found at <http://www.gpsinformation.org/dale/nmea.htm>.

The picture below shows VisualGPS displaying the coordinates from the GPS module. Now you know where I used to live.

